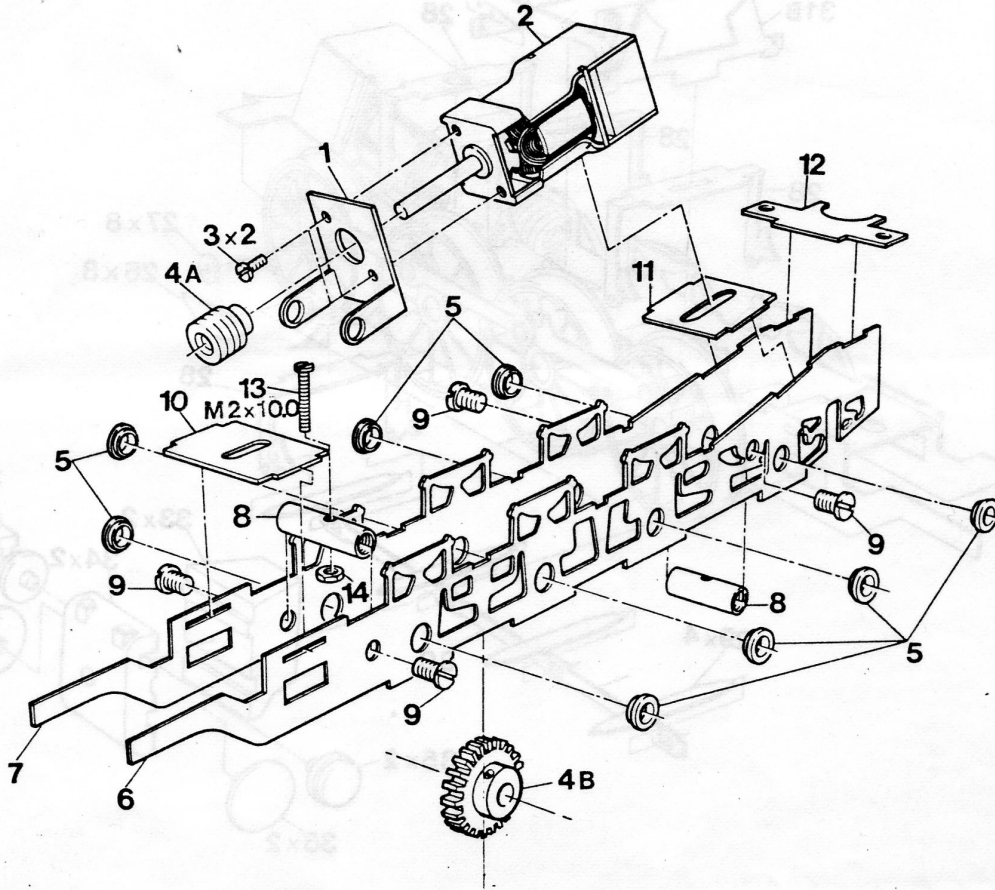
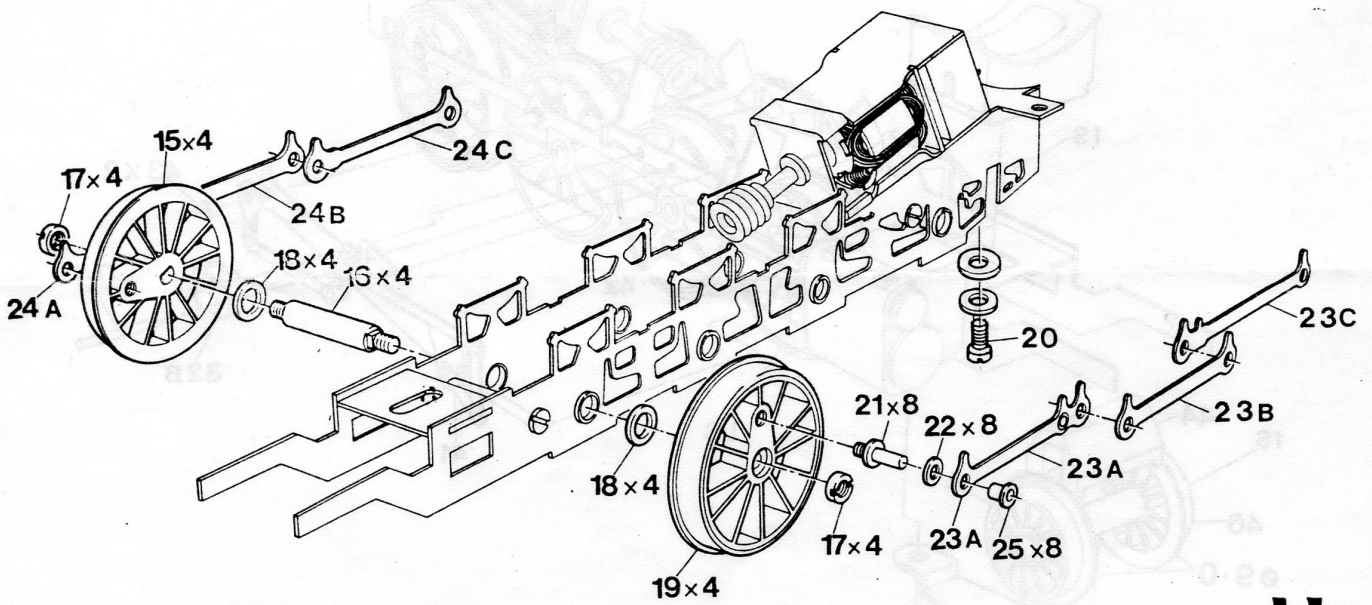


1



**dh**  
E119  
TYPE 29  
CONSETT, ENGLAND

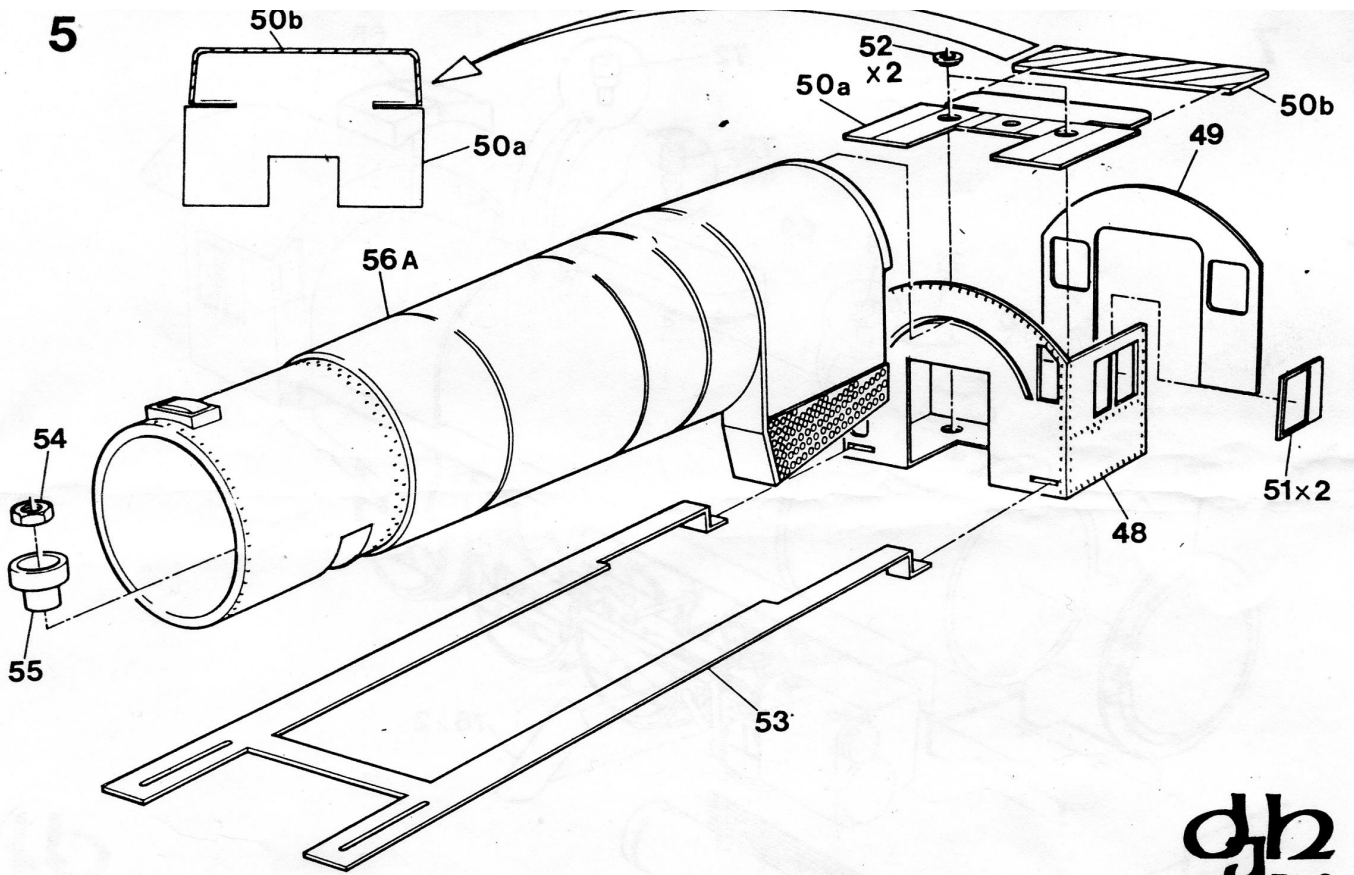
2



**dh**  
E119  
TYPE 29  
CONSETT, ENGLAND

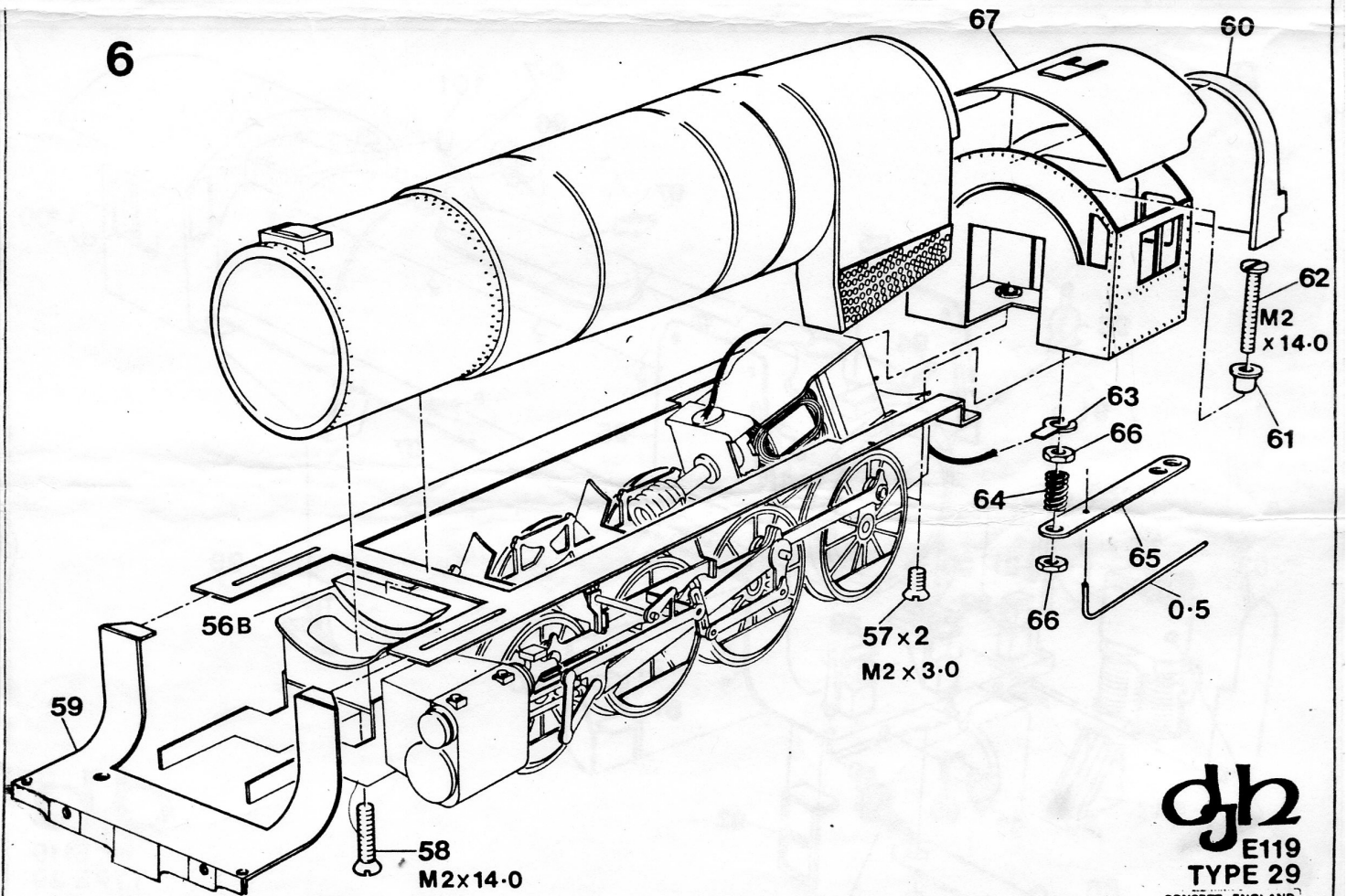


5



**dh**  
 E119  
 TYPE 29  
 CONSETT, ENGLAND

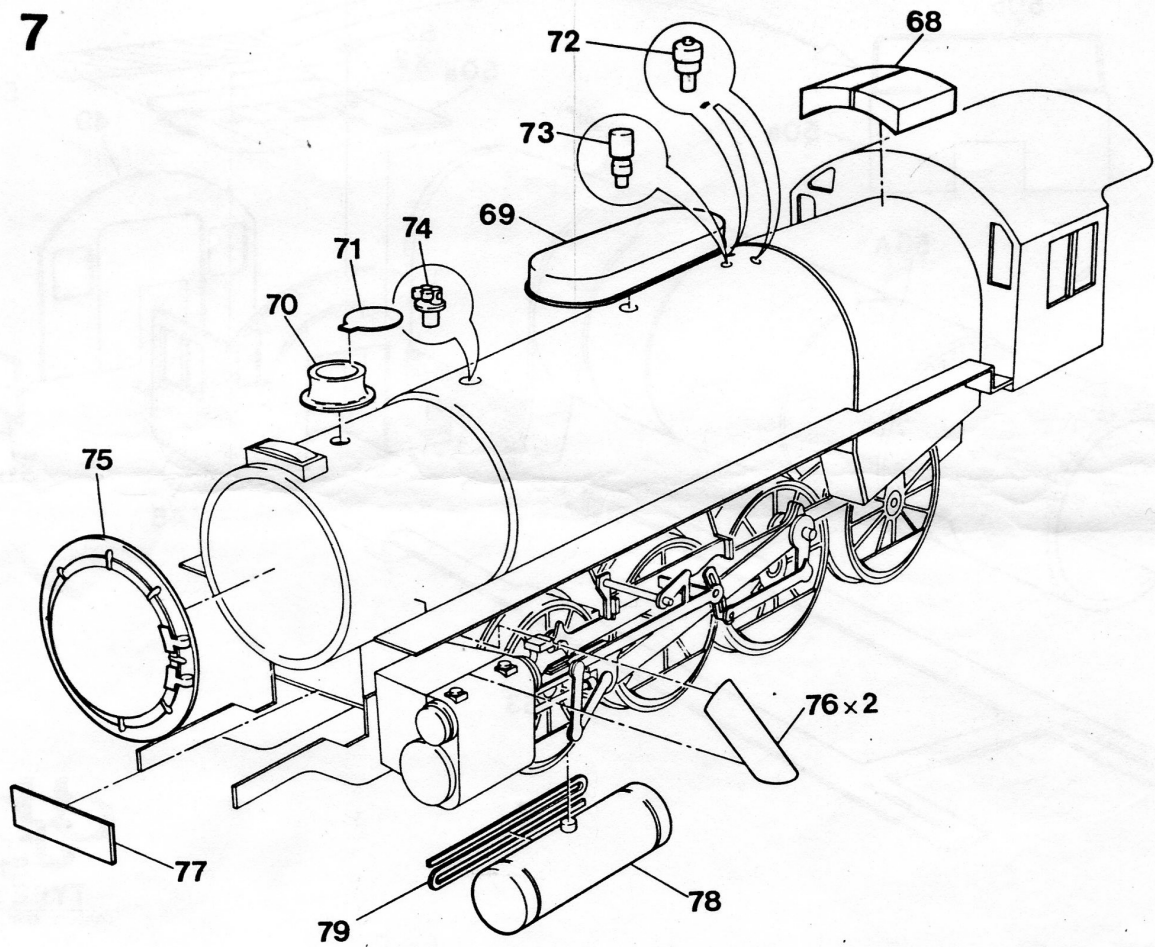
6



**dh**  
 E119  
 TYPE 29  
 CONSETT, ENGLAND

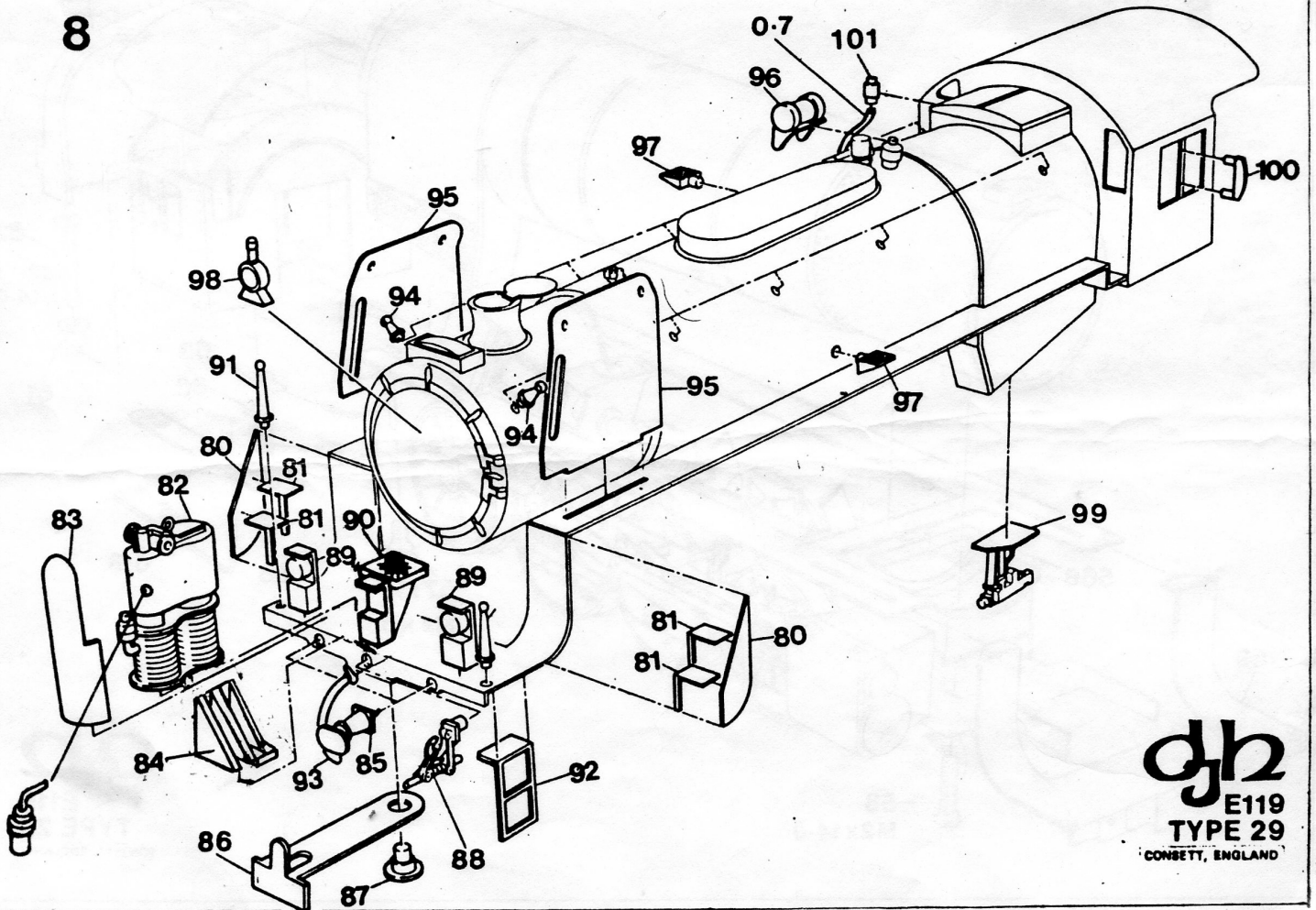


7



**dh**  
E119  
TYPE 29  
CONSETT, ENGLAND

8

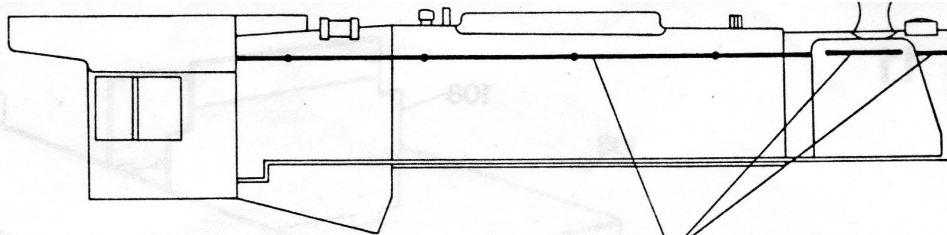


**dh**  
E119  
TYPE 29  
CONSETT, ENGLAND

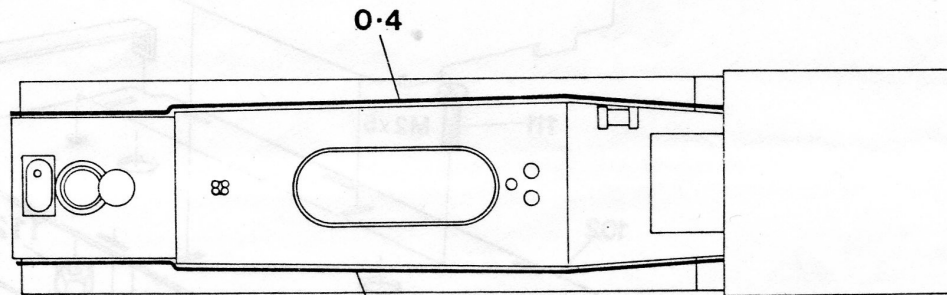


9

**dh**  
E119  
TYPE 29  
CONSETT, ENGLAND

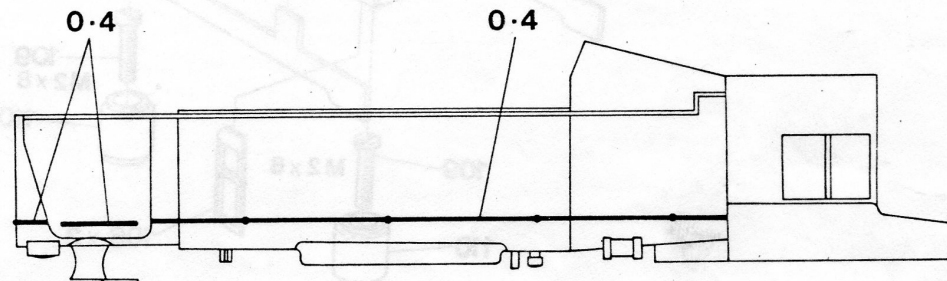


0.4



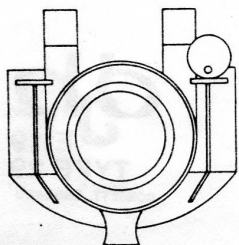
0.4

0.4



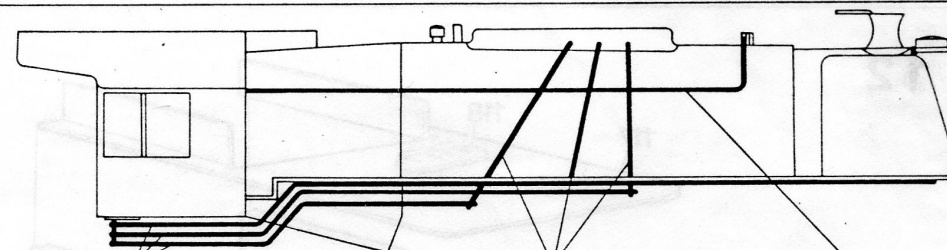
0.4

0.4



10

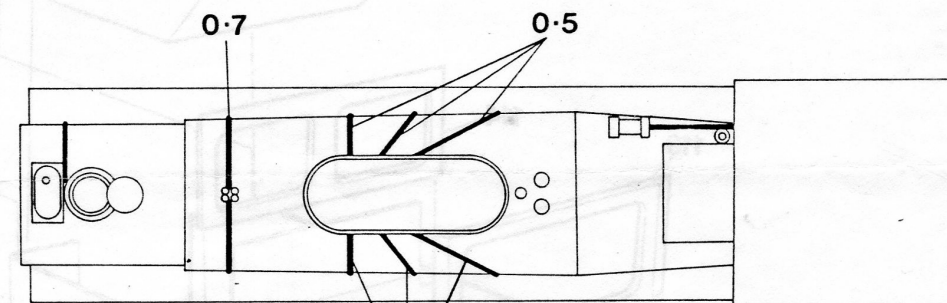
**dh**  
E119  
TYPE 29  
CONSETT, ENGLAND



0.5

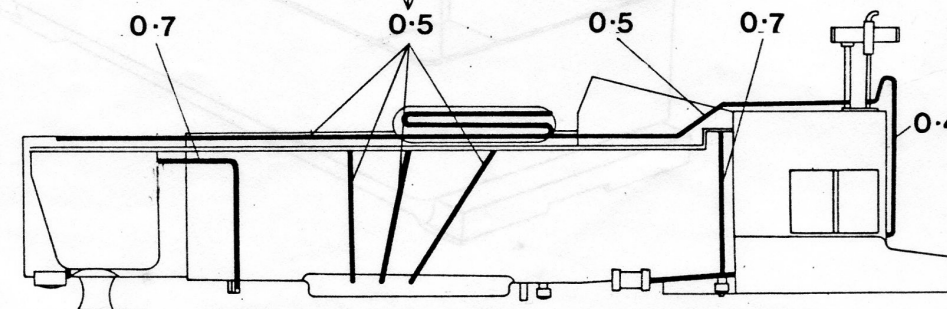
0.5

0.7



0.7

0.5



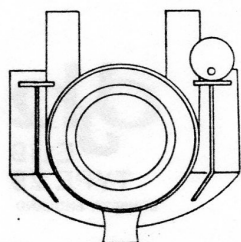
0.7

0.5

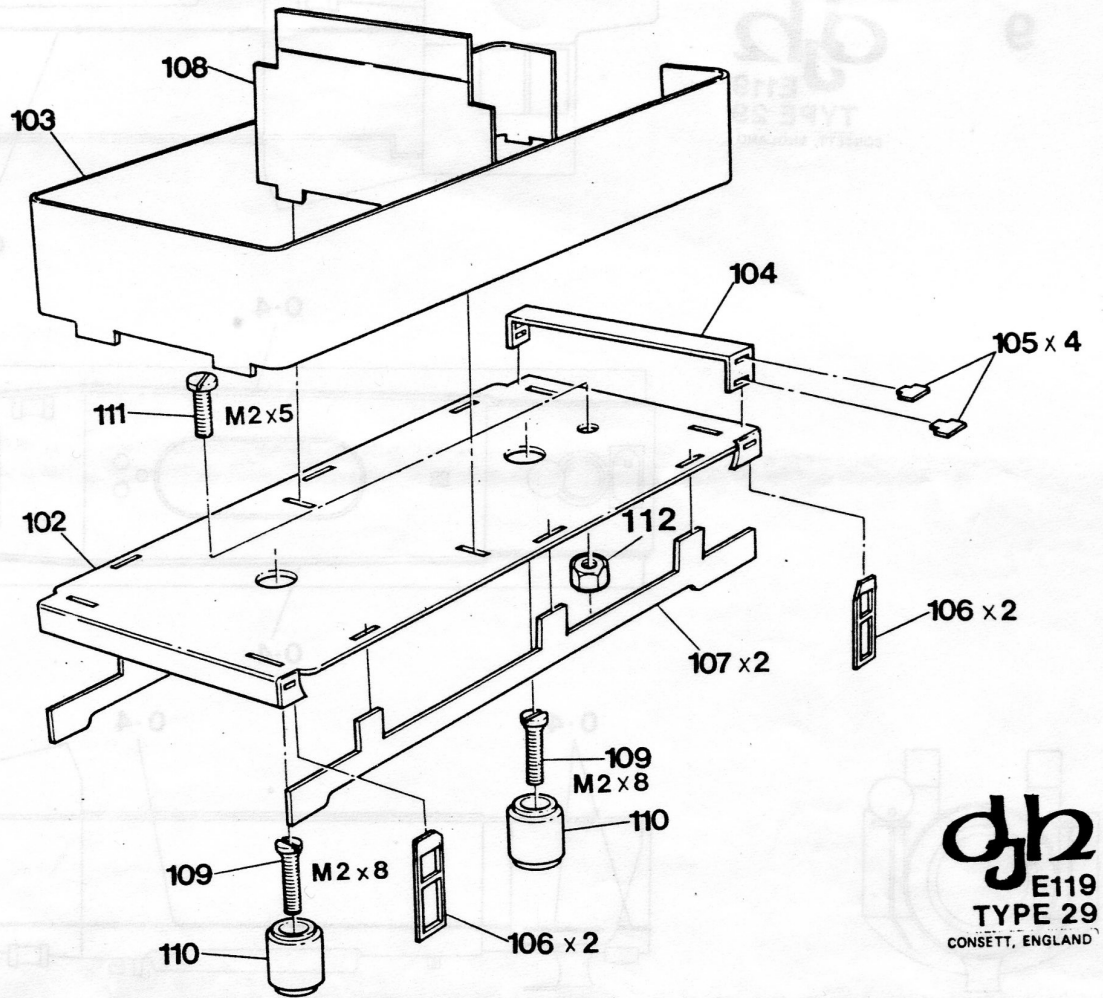
0.5

0.7

0.4

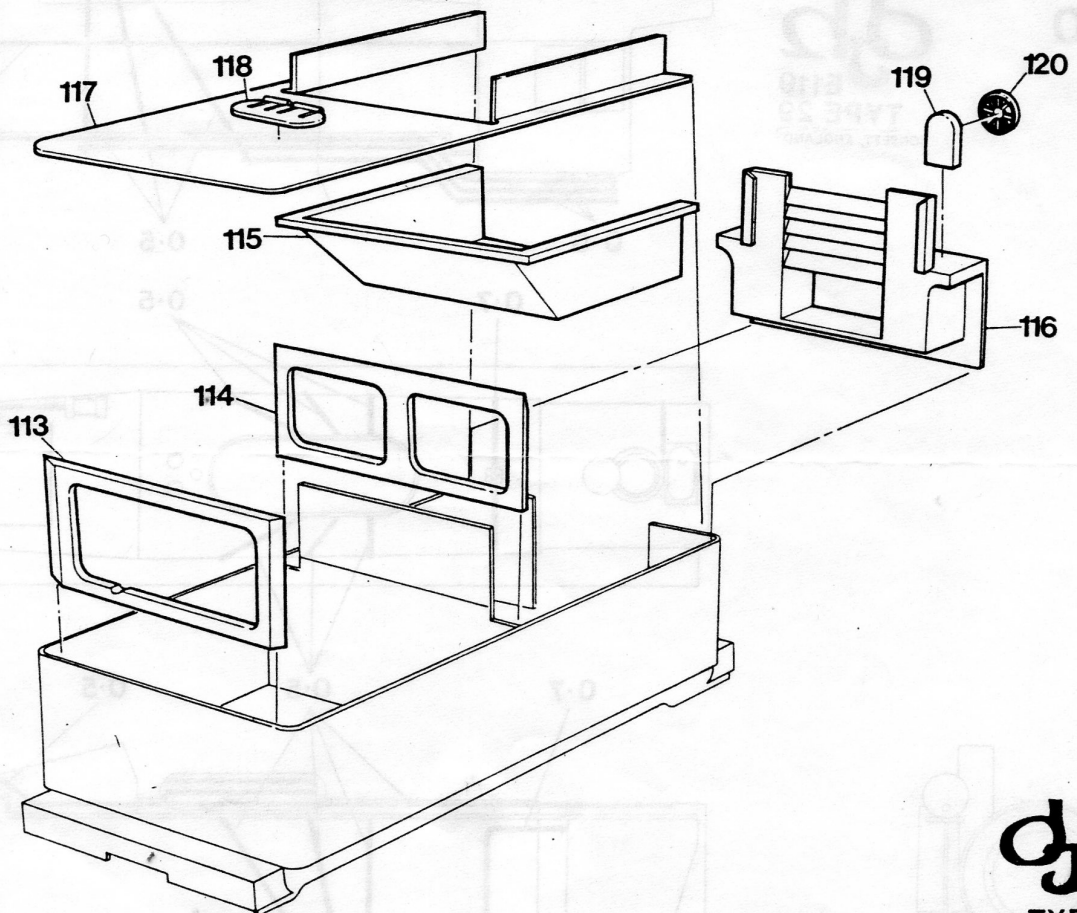


11



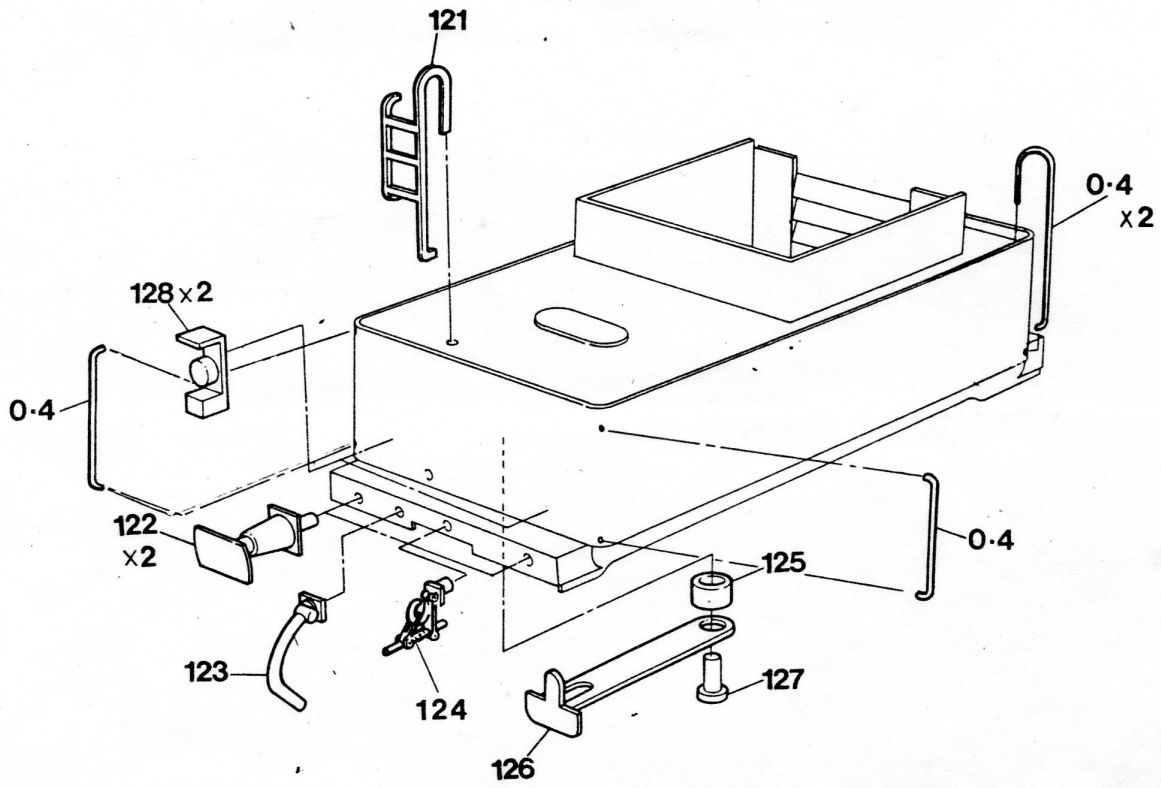
**dh**  
E119  
TYPE 29  
CONSETT, ENGLAND

12



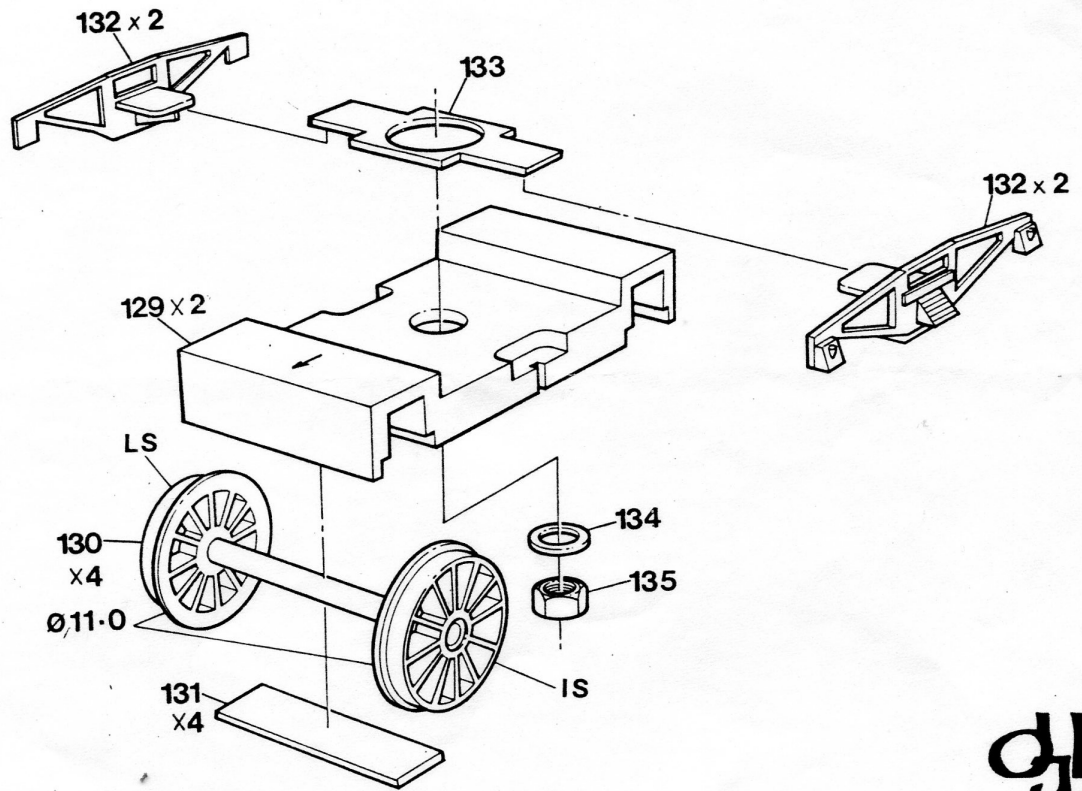
**dh**  
E119  
TYPE 29  
CONSETT, ENGLAND

13



**dh**  
E119  
TYPE 29  
CONSETT, ENGLAND

14



**dh**  
E119  
TYPE 29  
CONSETT, ENGLAND



List of PartsChassis

1. Motor Bracket
2. Motor
3. " Screws (2)
4. Gear and Worm
5. Bushes x 8
6. Frame L/H
7. " R/H
8. Spacers (2)
9. Spacer Screws (4)
10. Front Plate
11. Motor Plate
12. Cab Chassis Fixing Plate
13. Pivot Screw M2 x 10mm
14. M2 Nut
15. Insulated Wheels (4)
16. Axles (4)
17. Axle Nuts (8)
18. Spacing Washers (8)
19. Non-Insulated Wheels (4)
20. Motor Screw & Spacing Washers (2)
21. Crankpins (8)
22. " Washers (8)
23. Coupling Rods L/H (3)
24. " " R/H (3)
25. Crankpin Fixers (8)
26. Balance Weights (8)
27. Axle Covers (8)
28. Brakes (4)
29. Crossmembers (4)
30. Pull Rod
31. Boiler Support Plates (2)
32. Motion Bracket Sides (2 pairs)
33. Cylinder Fixing Blocks (2)
34. " Sides (2)
35. " Front Tops (2)
36. " " Bottoms (2)
37. " Back Tops (2)
38. " " Bottoms (2)
39. Slidebars (2)
40. Saddle
41. Made-up Valve Gear
42. Slidebar Ends (2)
43. Crankpin Fixers (2)
44. Bogie Top
45. " Bottom
46. " Wheel
47. M2 Nut

List of PartsBody

48. Cab
49. " Back
50. Floor & Plasticard Fall Plate
51. Window Interiors (2)
52. Threaded Bushes (2)
53. Footplate
54. M2 Nut
55. Front Fixing Bush
- 56a. Boiler/56b. Boiler Bottom Ins
57. Chassis Cab Fixing Screws  
M2 x 3mm (2)
58. Front Fixing Screw  
M2 x 14mm
59. Front Footplate
60. Cab Detail
61. Insulator
62. M2 x 14 C/H
63. Tag
64. Spring
65. Tender Loco Bar
66. M2 Nuts (2)
67. Roof
68. Toolbox (next to cab)
69. Dome
70. Chimney
71. " Top
72. Safety Valves (2)
73. Whistle
74. Steam Turret
75. Smokebox Door
76. Steam Pipes (2)
77. Saddle Front Cover
78. Cylinder
79. " Pipes
80. Footplate Sides (2)
81. Steps (4)
82. Pump
83. " Cover
84. Step
85. Buffers (2)
86. Coupler
87. " Pin
88. Dummy Coupling
89. Lamps (2)
90. Lamp Bracket
91. Handrail Poles (2)
92. Steps (2)
93. Vacuum Pipe
94. Handrail Knobs (12)
95. Deflectors (1-pair)
96. Generator
97. Boiler Steps (2)
98. Lamp
99. Ejector
100. Window Shades (2)
101. Relief Valve

List of PartsTender

- 102. Footplate
- 103. Sides
- 104. Second Level Floor
- 105. Steps (4)
- 106. Side Steps (4)
- 107. Side Valance (2)
- 108. Middle Partition
- 109. M2 x 8 C/S Screws (2)
- 110. Bogie Pivot Holders (2)
- 111. Tender Loco Screw M2 x 5
- 112. M2 Nut
- 113. Rear Top Support
- 114. Middle Top Support
- 115. Coal Trough
- 116. Front
- 117. Tender Top
- 118. Toolbox
- 119. Wheel Holder
- 120. Wheel
- 121. Ladder
- 122. Buffers (2)
- 123. Vac Pipe
- 124. Dummy Coupling
- 125. Coupler Box
- 126. Coupler
- 127. " Pin
- 128. Lamps (2)
- 129. Bogie Top (2)
- 130. Wheels (4)
- 131. Bottoms (4)
- 132. Sideframes (4)
- 133. Sideframe Spacer Plate (2)
- 134. Keeper-washers (2)
- 135. M2 Nuts (2)

Insulated Wire x 100 mm

0.4 mm  $\phi$  Wire x 260 mm

0.5 mm  $\phi$  Wire x 450 mm

0.7 mm  $\phi$  Wire x 300 mm

**DJH**

# **TYPE 29**

---

Pièces de rectification.

Gewijzigde onderdelen.

**JOCADIS**



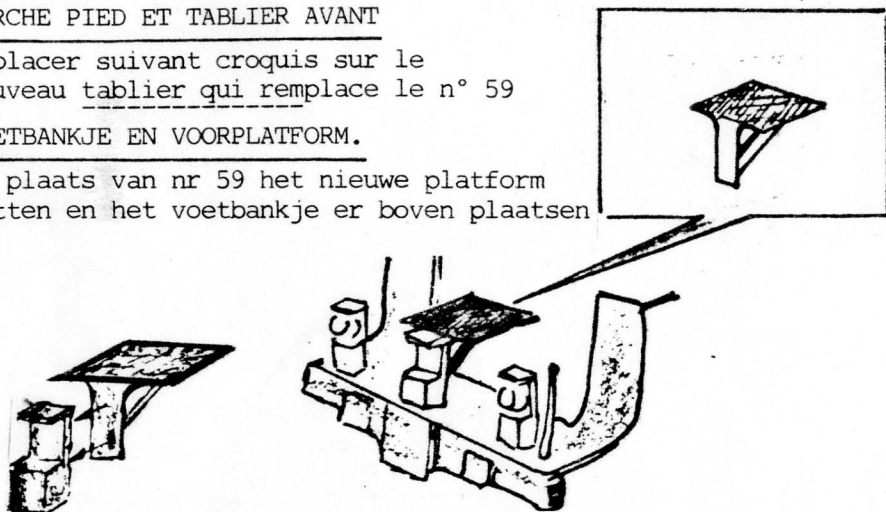


MARCHE PIED ET TABLIER AVANT

à placer suivant croquis sur le nouveau tablier qui remplace le n° 59

VOETBANKJE EN VOORPLATFORM.

In plaats van nr 59 het nieuwe platform zetten en het voetbankje er boven plaatsen



REHAUSSE TENDER.

Supprimer les rehausses en laiton (mettre la pièce à plat et couper avec un couteau Cutter) et placer les 3 nouvelles pièces en métal blanc.

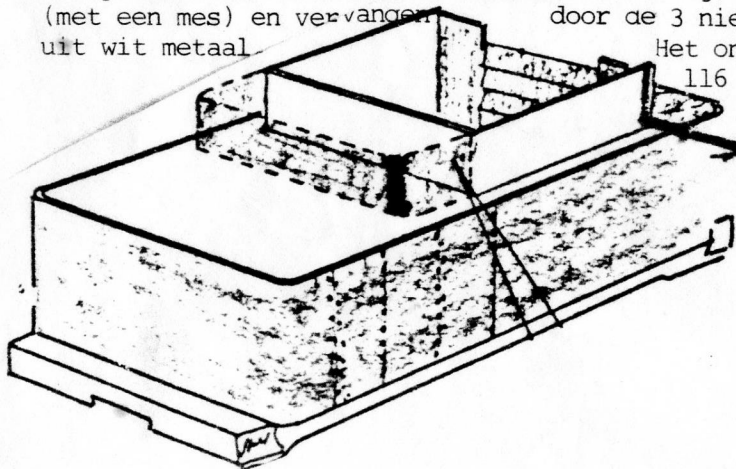
La pièce n° 116 est éventuellement à remplacer par la nouvelle.

TENDER.

De opstaande boorden van de kolenbak (messing) verwijderen (met een mes) en vervangen door de 3 nieuwe delen uit wit metaal.

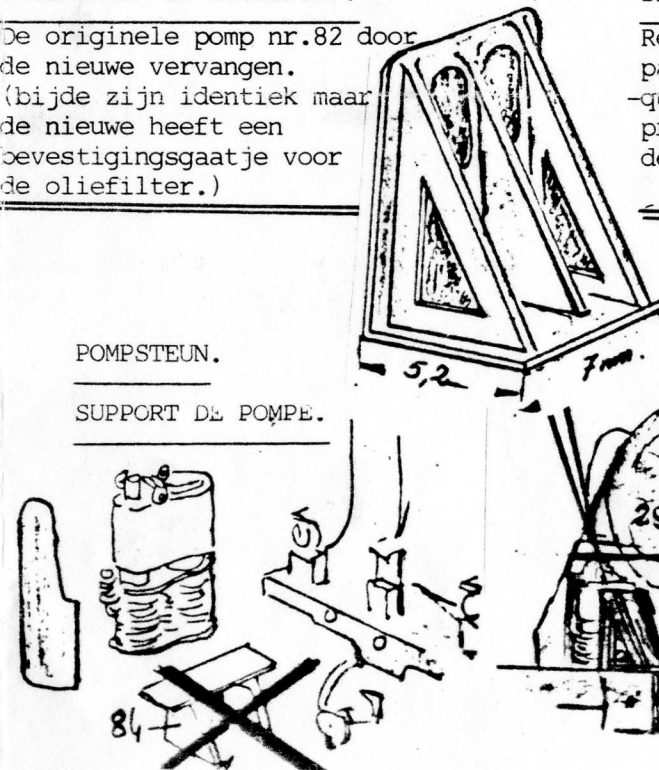
Het onderdeel nr 116 door het nieuwe eventueel

vervangen.



OLIEFILTER EN LUCHTPOMP.

De originele pomp nr.82 door de nieuwe vervangen. (bijde zijn identiek maar de nieuwe heeft een bevestigingsgaatje voor de oliefilter.)



POMPSTEUN.

SUPPORT DE POMPE.

DESHUILEUR ET POMPE.

Remplacer le pompe n°82 par la nouvelle, identique, mais avec un trou prévu pour placer le déshuileur.

